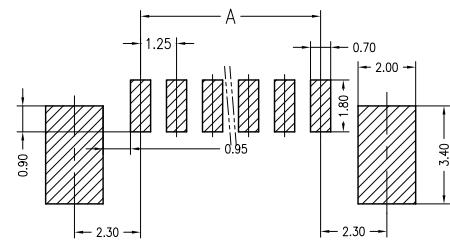
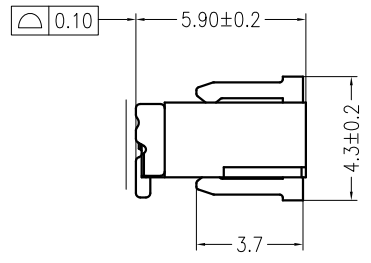
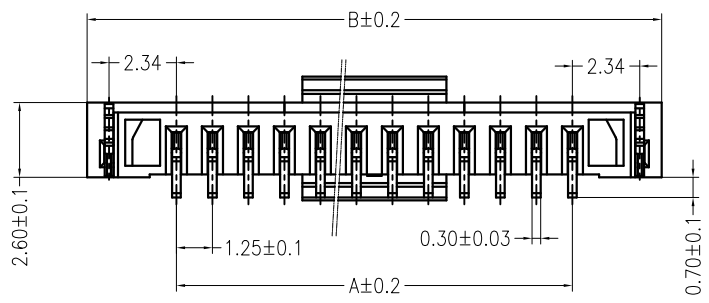
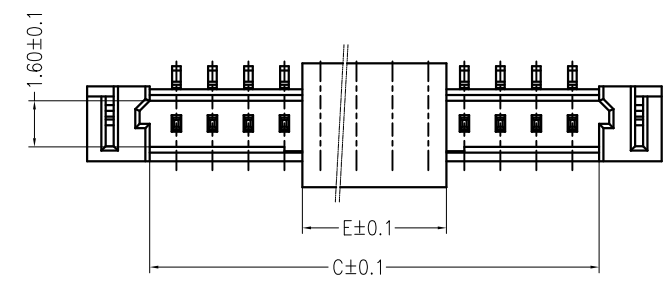
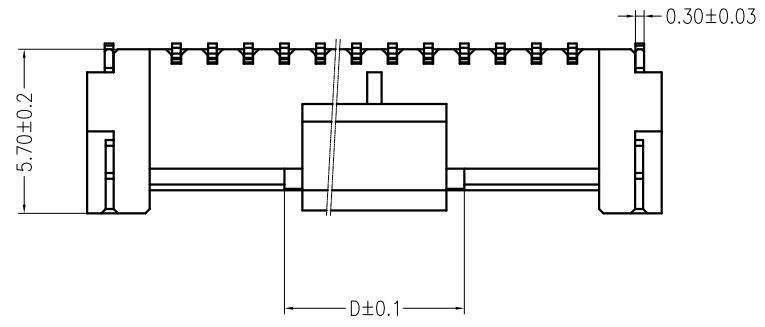


REV	DESCRIPTION	DESIGN	DATE
AO	NEW RELEASE	Wudanping	2017/07/28

孔位	DIM A	DIM B	DIM C	DIM D	DIM E
2pin	1.25	7.45	3.05	2.50	2.90
3pin	2.50	8.70	4.30	3.00	
4pin	3.75	9.95	5.55	3.75	
5pin	5.00	11.20	6.80	5.00	
6pin	6.25	12.45	8.05	6.25	
7pin	7.50	13.70	9.30		
8pin	8.75	14.95	10.55		
9pin	10.00	16.20	11.80		
10pin	11.25	17.45	13.05		
11pin	12.50	18.70	14.30		
12pin	13.75	19.95	15.55		
13pin	15.00	21.20	16.80		
14pin	16.25	22.45	18.05		
15pin	17.50	23.70	19.30		
*16pin	18.75	24.95	20.55	5.00	
*17pin	20.00	26.20	21.80		
*18pin	21.25	27.45	23.05		
*19pin	22.50	28.70	24.30		
*20pin	23.75	29.95	25.55		
*21pin	25.00	31.20	26.80		
*22pin	26.25	32.45	28.05		
*23pin	27.50	33.70	29.30		
*24pin	28.75	34.95	30.55		
*25pin	30.00	36.20	31.80		
*26pin	31.25	37.45	33.05		
*27pin	32.50	38.70	34.30		
*28pin	33.75	39.95	35.55		
*29pin	35.00	41.20	36.80		
30pin	36.25	42.45	38.05		



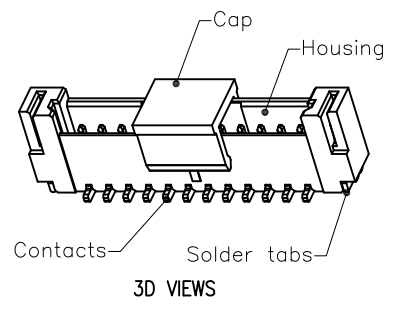
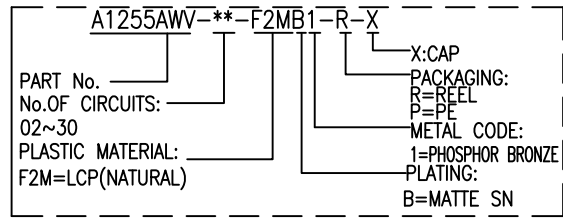
SUGGESTED PCB LAYOUT



Specifications:

- Contact resistance: ≤20mΩ
- Insulation resistance: ≥500MΩ
- Rated voltage: 150V AC DC
- Rated current: 1.0A AC DC
- Withstand voltage: 500V AC/minute
- Temperature range: -25℃ ~ +85℃
- Housing: LCP UL94V-0, Natural
- CAP: LCP UL94V-0, Natural
- Contacts: Phosphor bronze/Matte sn
- Solder tabs: Phosphor bronze/Matte sn

ORDER INFORMATION:



3D VIEWS

JKUN 温州健坤接插件有限公司 WENZHOU JKUN CONNECTOR CO.,LTD.		TITLE: 1.25mmPITCH 180°WAFER SMT TYPE	
GENERAL TOLERANCE		USE:	PART NO.:
X. ±0.50	X. ±5°	CUSTOMER	A1255AWV-**-F2MB1-R-X
X.X ±0.30	X.X ±2°	APPD: Shaojinghe	DWG NO.:
X.XX ±0.20	X.XX ±1°	CHKD: Zenglingqing	JKUN/GCKH-0719
UNITS: mm	DR: Jiangjiayin	SCALE	SHEET
		1 : 1	1 / 1