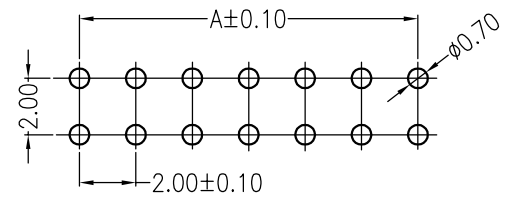
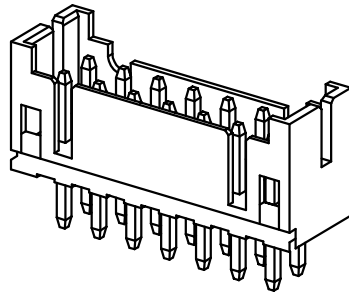
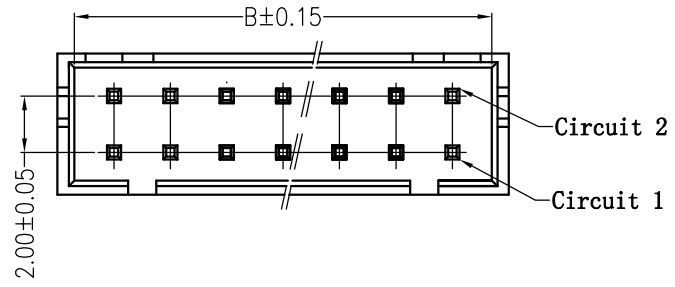


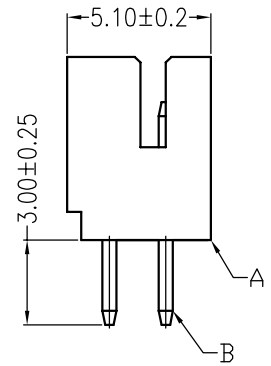
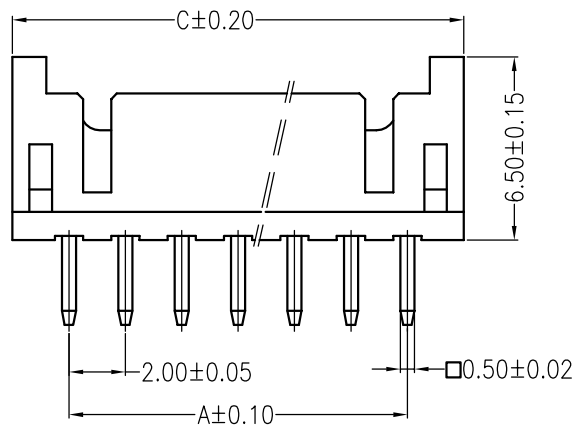
A B C D

E F

REV	ECN No.	DESCRIPTION	DESIGN	DATE
A0		Release	周秀龙	2017.11.16



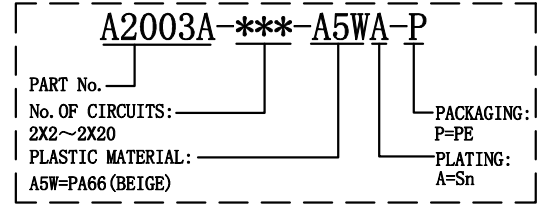
SUGGESTED PCB LAYOUT
(COMPONENT SIDE)



主要技术参数 Main Specifications

- 线 数 (Poles): 02 to 16
- 接触电阻 (Contact resistance): $\leq 20m\Omega$
- 绝缘电阻 (Insulation resistance): $\geq 1000M\Omega$
- 额定电压 (Rated voltage): 250V AC DC
- 额定电流 (Rated current): 2.0A AC DC
- 耐 电压 (Withstand Voltage): 1000V AC/minute
- 温度范围 (Temperature Range): $-25^{\circ}C \sim +85^{\circ}C$

ORDER INFORMATION:



Circuits	Dimensions (mm)			Circuits	Dimensions (mm)		
	A	B	C		A	B	C
202 (2X2)	2.00	5.00	6.00	212 (2X12)	22.00	25.00	26.00
203 (2X3)	4.00	7.00	8.00	213 (2X13)	24.00	27.00	28.00
204 (2X4)	6.00	9.00	10.0	214 (2X14)	26.00	29.00	30.00
205 (2X5)	8.00	11.00	12.00	215 (2X15)	28.00	31.00	32.00
206 (2X6)	10.00	13.00	14.00	216 (2X16)	30.00	33.00	34.00
207 (2X7)	12.00	15.00	16.00	217 (2X17)	32.00	35.00	36.00
208 (2X8)	14.00	17.00	18.00	218 (2X18)	34.00	37.00	38.00
209 (2X9)	16.00	19.00	20.00	219 (2X19)	36.00	39.00	40.00
210 (2X10)	18.00	21.00	22.00	220 (2X20)	38.00	41.00	42.00
211 (2X11)	20.00	23.00	24.00				

C				
B	CONTACT	4~40 PCS	Brass	Sn-plated
A	HOUSING	1 PCS	PA66	UL 94V-0, COLOR:BEIGE
ITEM	COMPONENT	Q'TY	MATERIAL	FINISH

JKUN 温州健坤接插件有限公司
WENZHOU JKUN CONNECTOR CO.,LTD.

TITLE: -
2.0mmPITCH 180°WAFER DIP TYEP

X.±0.5	X.±5'	USE: CUSTOMER	PART NO.: A2003A-***-A5WA-P
.X±0.3	.X±2'		
.XX±0.25	.XX±1'	CHKD: 田峰	DWG NO.: JKUN-GCCP-0533
---	---	DR: 周秀龙	SCALE 1 : 1
UNITS: mm		SHEET 1 / 1	

A B C D

E F