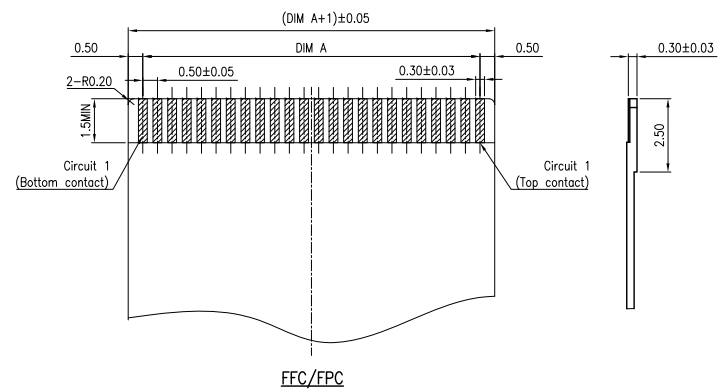
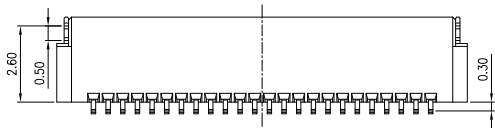
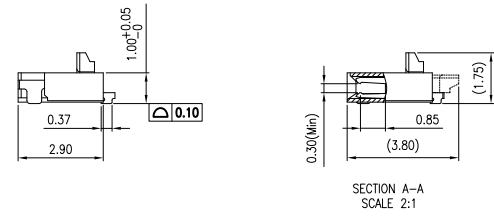
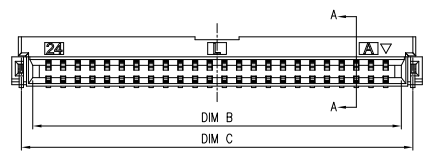
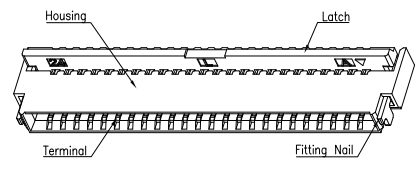
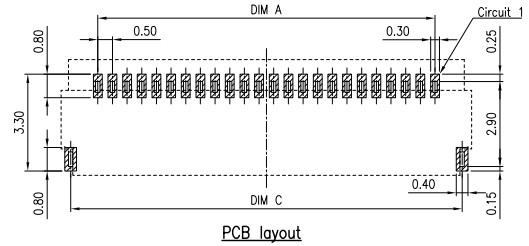
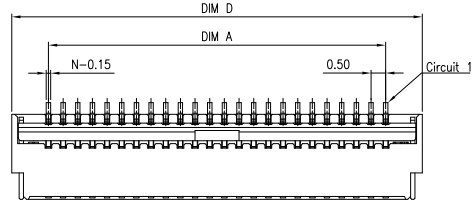


REV	DESCRIPTION	DESIGN	DATE
A	NEW RELEASE	Ryan	2021/10/13



CKT	DIM A	DIM B	DIM C	DIM D	CKT	DIM A	DIM B	DIM C	DIM D
4	1.50	2.57	3.35	4.00	28	13.50	14.57	15.35	16.00
5	2.00	3.07	3.85	4.50	29	14.00	15.07	15.85	16.50
6	2.50	3.57	4.35	5.00	30	14.50	15.57	16.35	17.00
7	3.00	4.07	4.85	5.50	31	15.00	16.07	16.85	17.50
8	3.50	4.57	5.35	6.00	32	15.50	16.57	17.35	18.00
9	4.00	5.07	5.85	6.50	33	16.00	17.07	17.85	18.50
10	4.50	5.57	6.35	7.00	34	16.50	17.57	18.35	19.00
11	5.00	6.07	6.85	7.50	35	17.00	18.07	18.85	19.50
12	5.50	6.57	7.35	8.00	36	17.50	18.57	19.35	20.00
13	6.00	7.07	7.85	8.50	37	18.00	19.07	19.85	20.50
14	6.50	7.57	8.35	9.00	38	18.50	19.57	20.35	21.00
15	7.00	8.07	8.85	9.50	39	19.00	20.07	20.85	21.50
16	7.50	8.57	9.35	10.00	40	19.50	20.57	21.35	22.00
17	8.00	9.07	9.85	10.50	41	20.00	21.07	21.85	22.50
18	8.50	9.57	10.35	11.00	42	20.50	21.57	22.35	23.00
19	9.00	10.07	10.85	11.50	43	21.00	22.07	22.85	23.50
20	9.50	10.57	11.35	12.00	44	21.50	22.57	23.35	24.00
21	10.00	11.07	11.85	12.50	45	22.00	23.07	23.85	24.50
22	10.50	11.57	12.35	13.00	46	22.50	23.57	24.35	25.00
23	11.00	12.07	12.85	13.50	47	23.00	24.07	24.85	25.50
24	11.50	12.57	13.35	14.00	48	23.50	24.57	25.35	26.00
25	12.00	13.07	13.85	14.50	49	24.00	25.07	25.85	26.50
26	12.50	13.57	14.35	15.00	50	24.50	25.57	26.35	27.00
27	13.00	14.07	14.85	15.50					

Specifications:
Housing:High temperature plastic UL94V-0;Color:natural
Latch:High temperature plastic UL94V-0;Color:black
Terminal:Copper alloy, Matte Tin/Gold
Fitting Nail:Copper alloy, Matte Tin
Product must comply HF RoHS specification
Contact resistance:≤30mΩ
Insulation resistance:≥100MΩ
Rated voltage:50V AC/DC
Rated current:0.5A AC/DC
Withstand Voltage:250V AC/minute
Temperature Range:-55°C~+105°C

ORDER INFORMATION:

F0504AWR-**-F4M*1-*
PART No. _____
No.OF CIRCUITS: _____
4~50
PLASTIC MATERIAL: _____
F4M=LCP(Natural)
PACKAGING:
R=REEL G=TUBE
Metal code:
1=Phosphor Bronze
PLATING:
B=Matte Tin
C=Gold

JKUN 温州健坤接插件有限公司
WENZHOU JKUN CONNECTOR CO.,LTD.

GENERAL TOLERANCE	
X.X ±0.15	X. ±5'
X.XX ±0.10	X.X ±2'
X.XXX ±0.05	X.XX ±1'
UNITS: mm	

USE: CUSTOMER
APPD: Shaojinghe
CHKD: Shaojinghe
DR: Ryan

TITLE:
FPC Pitch0.5 H1.0 Back-Flip Conn. SMT Type
PART NO.:
F0504AWR-**-F4M*1-*
DWG NO.:
JKUN-GCKH-
SCALE: 1 : 1
SHEET: 1 / 1