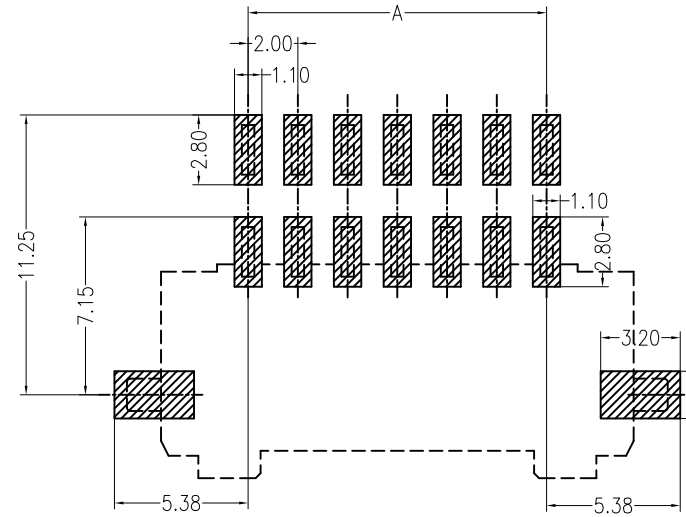
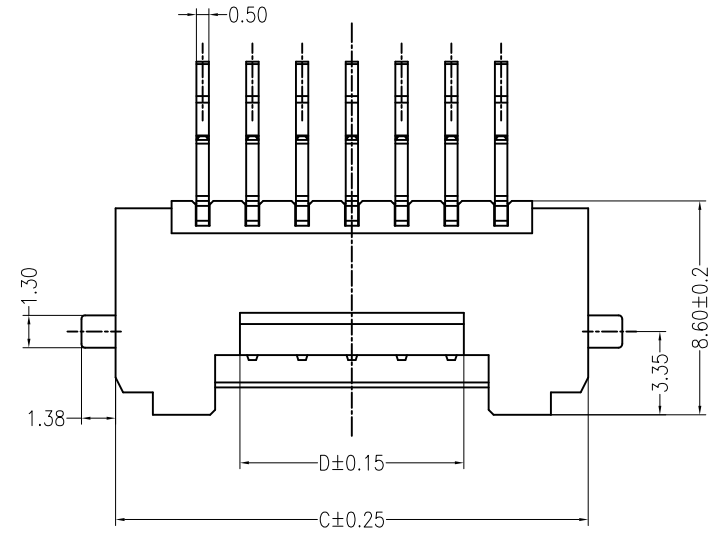
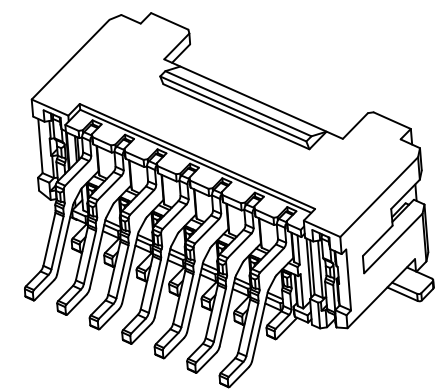
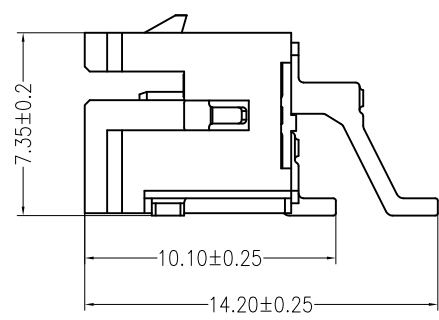
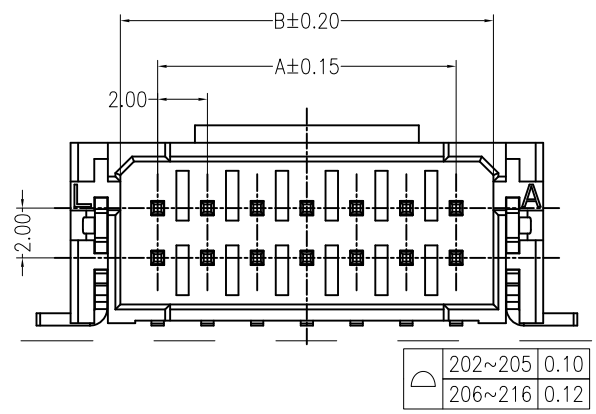


REV	DESCRIPTION	DESIGN	DATE
A0	NEW RELEASE	Lingqing	2019/11/06



**Specifications:**  
 Contact resistance:  $\leq 30m\Omega$   
 Insulation resistance:  $\geq 1000M\Omega$   
 Rated voltage: 250V AC DC  
 Rated current: 3.0A AC DC  
 Withstand Voltage: 1000V AC/minute  
 Temperature Range:  $-25^{\circ}C \sim +85^{\circ}C$   
 Housing: LCP UL94V-0, BEIGE  
 Contacts: Brass/MATTE Sn-plated  
 Solder Tabs: Brass/MATTE Sn-plated

PCB LAYOUT(Tolerance:  $\pm 0.05$ )



Circuits	Dimensions (mm)			
	A	B	C	D
202 (2X2)	2.00	5.00	9.00	3.00
203 (2X3)	4.00	7.00	11.00	3.00
204 (2X4)	6.00	9.00	13.00	3.00
205 (2X5)	8.00	11.00	15.00	5.00
206 (2X6)	10.00	13.00	17.00	7.00
207 (2X7)	12.00	15.00	19.00	9.00
208 (2X8)	14.00	17.00	21.00	11.00
209 (2X9)	16.00	19.00	23.00	13.00
210 (2X10)	18.00	21.00	25.00	15.00
211 (2X11)	20.00	23.00	27.00	17.00
212 (2X12)	22.00	25.00	29.00	19.00
*213 (2X13)	24.00	27.00	31.00	21.00
214 (2X14)	26.00	29.00	33.00	23.00
215 (2X15)	28.00	31.00	35.00	25.00
*216 (2X16)	30.00	33.00	37.00	27.00

ORDER INFORMATION:

**A2004AWR-2\*\*-F4MB3-R**

PART No. \_\_\_\_\_  
 No. OF CIRCUITS: \_\_\_\_\_  
 PLASTIC MATERIAL: \_\_\_\_\_  
 F4M=LCP

PACKAGING:  
 R=REEL

Metal code:  
 3=Brass  
 PLATING:  
 B=MATTE Sn

**JKUN** 温州健坤接插件有限公司  
 WENZHOU JKUN CONNECTOR CO.,LTD.

GENERAL TOLERANCE: X.  $\pm 0.50$ , X.X  $\pm 0.30$ , X.XX  $\pm 0.20$   
 X.  $\pm 5^{\circ}$ , X.X  $\pm 2^{\circ}$ , X.XX  $\pm 1^{\circ}$

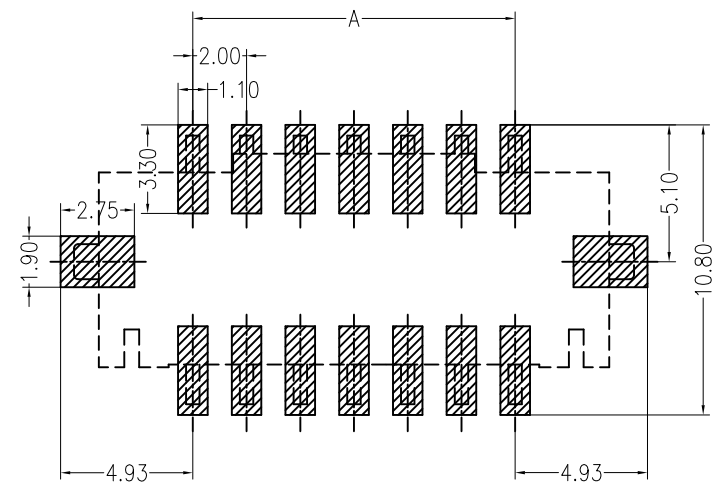
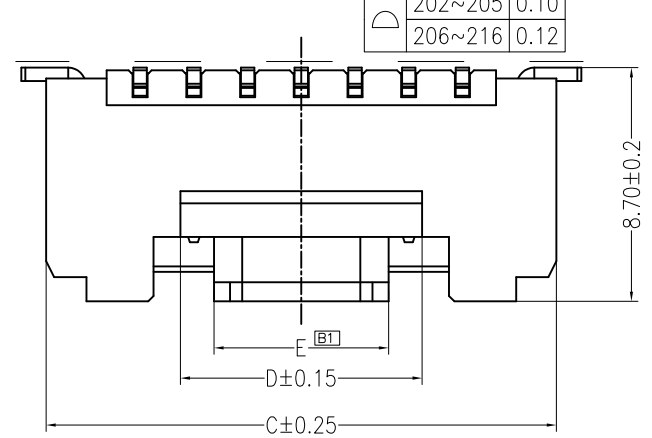
USE: CUSTOMER  
 APPD: Liuzhengling  
 CHKD: Steven  
 DR: Zenglingqing

UNITS: mm

TITLE: 2.0 Pitch Wafer 90° SMT  
 PART NO.: A2004AWR-2\*\*-F4MB3-R  
 DWG NO.: JKUN-GCKH-0837  
 SCALE: 1 : 1  
 SHEET: 1 / 1

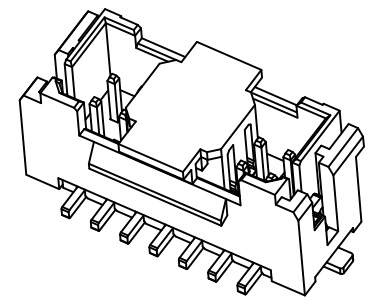
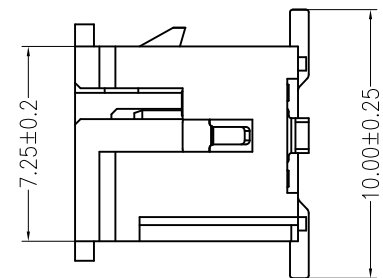
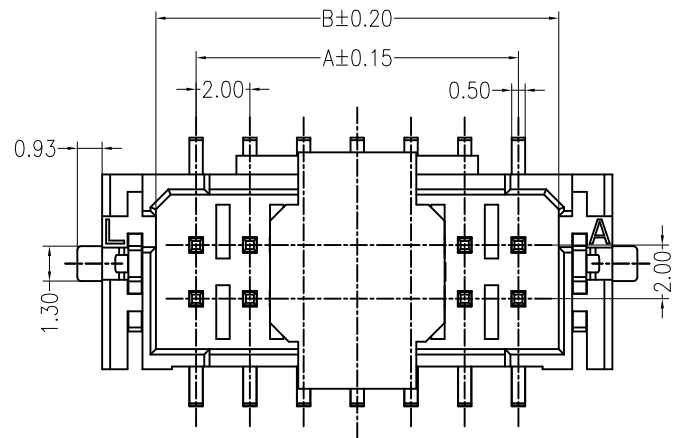
REV	DESCRIPTION	DESIGN	DATE
A0	NEW RELEASE	Lingqing	2019/11/06
B	Improve the stability of stamping products	Lingqing	2019/11/06

202~205	0.10
206~216	0.12



**Specifications:**  
 Contact resistance:  $\leq 30m\Omega$   
 Insulation resistance:  $\geq 1000M\Omega$   
 Rated voltage: 250V AC DC  
 Rated current: 3.0A AC DC  
 Withstand Voltage: 1000V AC/minute  
 Temperature Range:  $-25^{\circ}C \sim +85^{\circ}C$   
 Housing: LCP UL94V-0, BEIGE  
 Cap: LCP UL94V-0, BEIGE  
 Contacts: Brass/MATTE Sn-plated  
 Solder Tabs: Brass/MATTE Sn-plated

PCB LAYOUT(Tolerance:  $\pm 0.05$ )



Circuits	Dimensions (mm)				
	A	B	C	D	E
202 (2X2)	2.00	5.00	9.00	3.00	小蓋 (4.5)
203 (2X3)	4.00	7.00	11.00	3.00	大蓋 (6.5)
204 (2X4)	6.00	9.00	13.00	3.00	
205 (2X5)	8.00	11.00	15.00	5.00	
206 (2X6)	10.00	13.00	17.00	7.00	
207 (2X7)	12.00	15.00	19.00	9.00	
208 (2X8)	14.00	17.00	21.00	11.00	
209 (2X9)	16.00	19.00	23.00	13.00	
210 (2X10)	18.00	21.00	25.00	15.00	
211 (2X11)	20.00	23.00	27.00	17.00	
212 (2X12)	22.00	25.00	29.00	19.00	
*213 (2X13)	24.00	27.00	31.00	21.00	
214 (2X14)	26.00	29.00	33.00	23.00	
215 (2X15)	28.00	31.00	35.00	25.00	
216 (2X16)	30.00	33.00	37.00	27.00	

ORDER INFORMATION:

**A2004AWV-2\*\*-F4MB3-R-X**

PART No. \_\_\_\_\_  
 No.OF CIRCUITS: \_\_\_\_\_  
 202-216  
 PLASTIC MATERIAL: \_\_\_\_\_  
 F4M=LCP

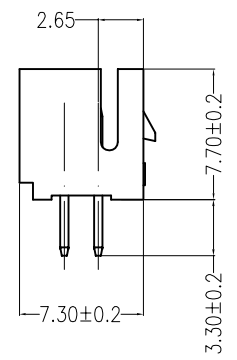
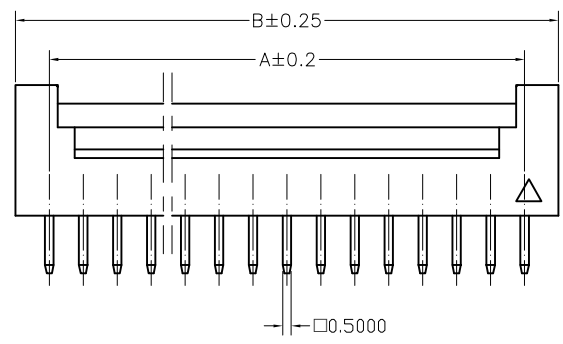
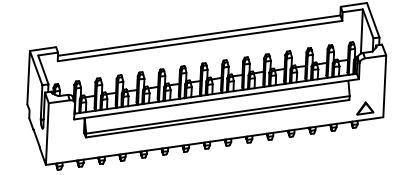
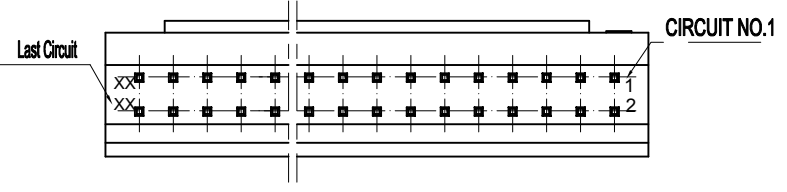
SPECIAL CODE:  
 X=Cap  
 PACKAGING:  
 R=REEL  
 Metal code:  
 3=Brass  
 PLATING:  
 B=MATTE Sn

**JKUN** 温州健坤接插件有限公司  
 WENZHOU JKUN CONNECTOR CO.,LTD.

TITLE: 2.0 Pitch Wafer 180° SMT

GENERAL TOLERANCE		USE:	PART NO.:
X. $\pm 0.50$	X. $\pm 5^{\circ}$	CUSTOMER	
X.X $\pm 0.30$	X.X $\pm 2^{\circ}$	APPD: Liuzhengling	
X.XX $\pm 0.20$	X.XX $\pm 1^{\circ}$	CHKD: Steven	DWG NO.:
UNITS: mm		DR: Zenglingqing	JKUN-GCKH-0838
			SCALE: 1 : 1
			SHEET: 1 / 1

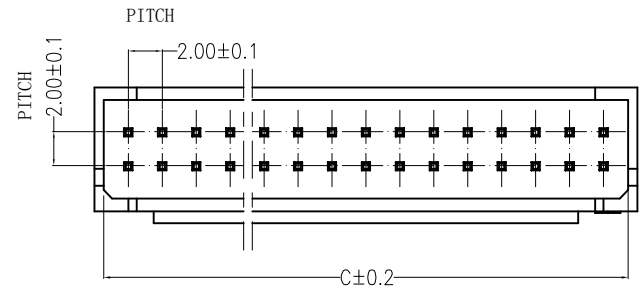
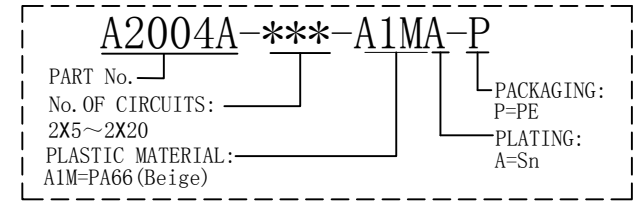
REV	ECN No.	DESCRIPTION	DESIGN	DATE
A0		Release	吴丹平	2017.03.23



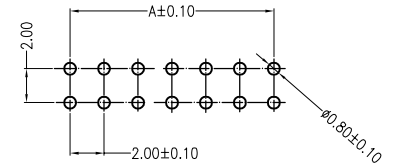
### 主要技术参数 Main Specifications

- 线数 (Poles): 04 to 30
- 接触电阻 (Contact resistance):  $\leq 30m\Omega$
- 绝缘电阻 (Insulation resistance):  $\geq 1000M\Omega$
- 额定电压 (Rated voltage): 250V AC DC
- 额定电流 (Rated current): 3.0A AC DC
- 耐电压 (Withstand Voltage): 1000V AC/minute
- 温度范围 (Temperature Range):  $-25^{\circ}C \sim +85^{\circ}C$

### ORDER INFORMATION:



Circuits	Dimension mm		
	A	B	C
2X2	2.00	6.00	4.90
2X3	4.00	8.00	6.90
2X4	6.00	10.00	8.90
2X5	8.00	12.00	10.90
2X6	10.00	14.00	12.90
2X7	12.00	16.00	14.90
2X8	14.00	18.00	16.90
2X9	16.00	20.00	18.90
2X10	18.00	22.00	20.90
2X11	20.00	24.00	22.90
2X12	22.00	26.00	24.90
2X13	24.00	28.00	26.90
2X14	26.00	30.00	28.90
2X15	28.00	32.00	30.90
2X16	30.00	34.00	32.90
2X17	32.00	36.00	34.90
2X18	34.00	38.00	36.90
2X19	36.00	40.00	38.90
2X20	38.00	42.00	40.90
~	~	~	~
2X30	58.00	62.00	60.90



SUGGESTED PCB LAYOUT (COMPONENT SIDE)

ITEM	COMPONENT	Q'TY	MATERIAL	FINISH
C	CONTACT	2~15 PCS	Brass	Sn-plated
B	CONTACT	2~15 PCS	Brass	Sn-plated
A	HOUSING	1 PCS	PA66	94-V0

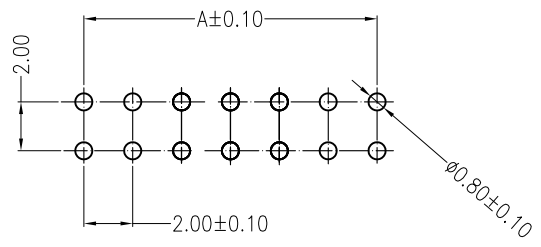
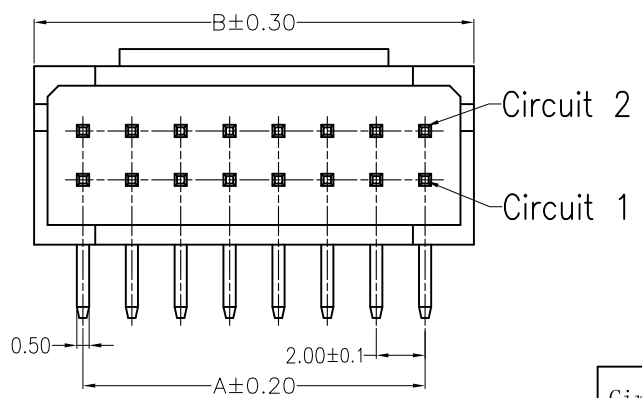
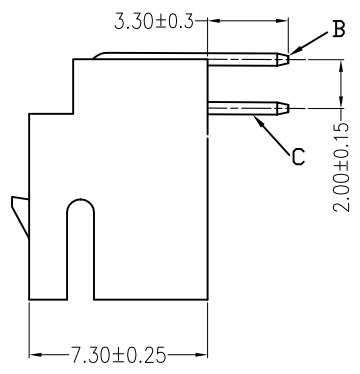
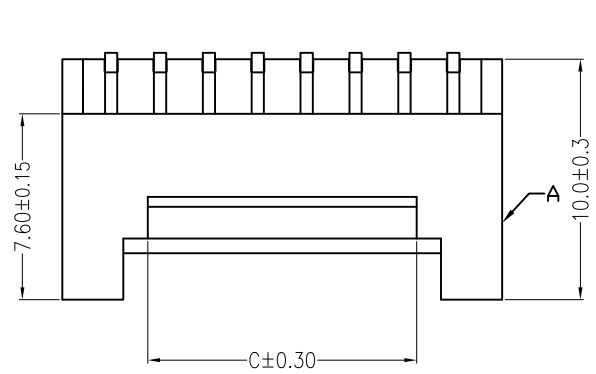
  

JKUN 温州健坤接插件有限公司 WENZHOU JKUN CONNECTOR CO.,LTD.		TITLE: - 2.00mm PITCH 90 *WAFER	
X.±0.5	X.±5'	USE: CUSTOMER	PART NO.:
.X±0.3	.X±2'		A2004A-***-A1MA-P
.XX±0.25	.XX±1'	APPD: 邵敬和	DWG NO.:
--	--	CHKD: 田峰	JKUN-GCCP-0733
⊕	◁	DR: 吴丹平	SCALE
	UNITS: mm		SHEET 1 : 1

A B C D

E F

REV	ECN No.	DESCRIPTION	DESIGN	DATE
A0		Release	吴丹平	2017.03.23



SUGGESTED PCB LAYOUT  
(COMPONENT SIDE)

Circuits	Dimensions (mm)		
	A	B	C
202 (2X2)	2.00	6.00	3.00
203 (2X3)	4.00	8.00	3.00
204 (2X4)	6.00	10.00	3.00
205 (2X5)	8.00	12.00	5.00
206 (2X6)	10.00	14.00	7.00
207 (2X7)	12.00	16.00	9.00
208 (2X8)	14.00	18.00	11.00
209 (2X9)	16.00	20.00	13.00
210 (2X10)	18.00	22.00	15.00
211 (2X11)	20.00	24.00	17.00
212 (2X12)	22.00	26.00	19.00
213 (2X13)	24.00	28.00	21.00
214 (2X14)	26.00	30.00	23.00
215 (2X15)	28.00	32.00	25.00

### 主要技术参数 Main Specifications

- 线数 (Poles): 04 to 30
- 接触电阻 (Contact resistance):  $\leq 30m\Omega$
- 绝缘电阻 (Insulation resistance):  $\geq 1000M\Omega$
- 额定电压 (Rated voltage): 250V AC DC
- 额定电流 (Rated current): 3.0A AC DC
- 耐电压 (Withstand Voltage): 1000V AC/minute
- 温度范围 (Temperature Range):  $-25^{\circ}C \sim +85^{\circ}C$

### ORDER INFORMATION:

A2004AWD-\*\*\*-A1MA-P-3

PART No.			PACKAGING:
No. OF CIRCUITS:			P=PE
2X5~2X15			PLATING:
PLASTIC MATERIAL:			A=Sn
A1M=PA66 (Beige)			

C	CONTACT	2~15 PCS	Brass	Sn-plated
B	CONTACT	2~15 PCS	Brass	Sn-plated
A	HOUSING	1 PCS	PA66	94-V0
ITEM	COMPONENT	Q'TY	MATERIAL	FINISH

**JKUN 温州健坤接插件有限公司**  
WENZHOU JKUN CONNECTOR CO.,LTD.

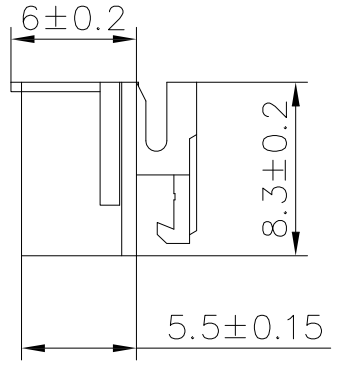
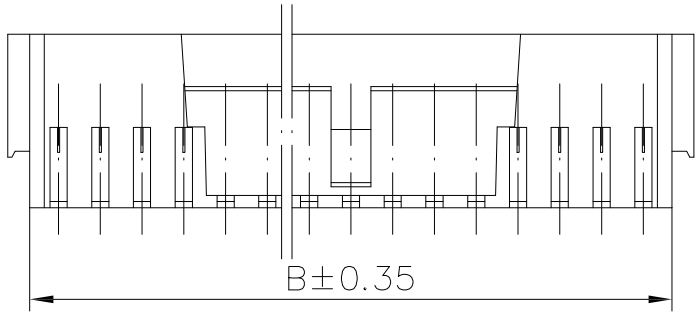
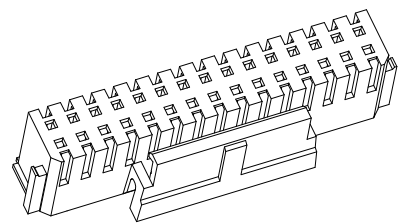
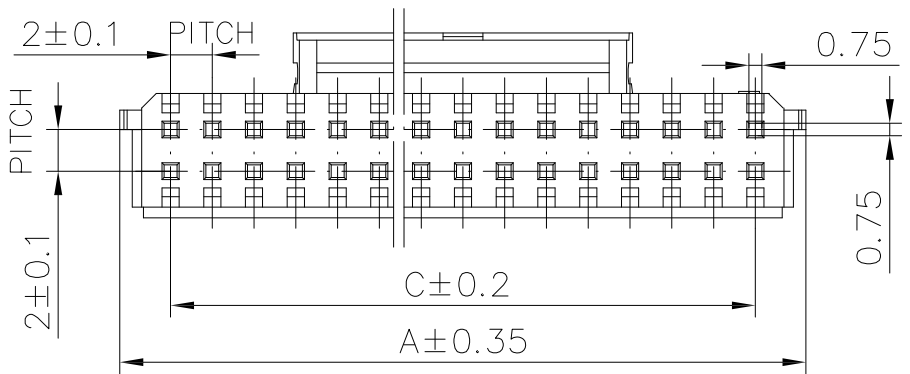
TITLE: A2004AWD-\*\*-03P  
2.00mm PITCH 90° WAFER

X±0.5	X±5'	USE: CUSTOMER	PART NO.:	
.X±0.3	.X±2'		A2004AWD-***-A1MA-P-3	
.XX±0.25	.XX±1'	APPD: 邵敬和	DWG NO.:	
--	--	CHKD: 田峰	JKUN-GCCP-0734	
⊕	◁	DR: 吴丹平	SCALE	SHEET
UNITS: mm			1 : 1	1 / 1

A B C D

E F

REV	ECN No.	DESCRIPTION	DESIGN	DATE
A0		Release	吴丹平	2017.03.23



### 主要技术参数 Main Specifications

- 线数 (Poles): 04 to 30
- 接触电阻 (Contact resistance):  $\leq 30m\Omega$
- 绝缘电阻 (Insulation resistance):  $\geq 1000M\Omega$
- 额定电压 (Rated voltage): 250V AC DC
- 额定电流 (Rated current): 3.0A AC DC
- 耐电压 (Withstand Voltage): 1000V AC/minute
- 温度范围 (Temperature Range):  $-25^{\circ}C \sim +85^{\circ}C$

### ORDER INFORMATION:

A2004Y-\*\*\*-A5W-P

PART No. \_\_\_\_\_

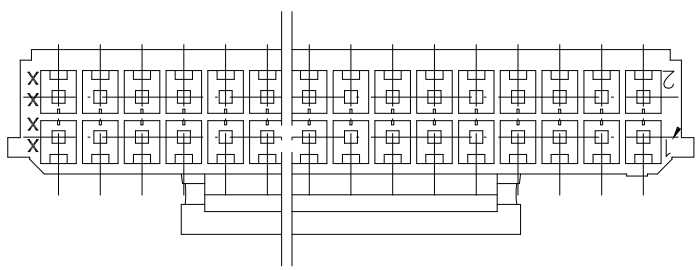
No. OF CIRCUITS: \_\_\_\_\_

2X5~2X15 \_\_\_\_\_

PLASTIC MATERIAL: \_\_\_\_\_

A5W=PA66(White) \_\_\_\_\_

PACKAGING:  
P=PE



Circuits	Dimensions (mm)		
	A	B	C
202(2X2)	7.00	4.70	2.00
203(2X3)	9.00	6.70	4.00
204(2X4)	11.00	8.70	6.00
205(2X5)	13.00	10.70	8.00
206(2X6)	15.00	12.70	10.00
207(2X7)	17.00	14.70	12.00
208(2X8)	19.00	16.70	14.00
209(2X9)	21.00	18.70	16.00
210(2X10)	23.00	20.70	18.00
211(2X11)	25.00	22.70	20.00
212(2X12)	27.00	24.70	22.00
213(2X13)	29.00	26.70	24.00
214(2X14)	31.00	28.70	26.00
215(2X15)	33.00	30.70	28.00
~	~	~	~
230(2X30)	62.00	60.70	58.00

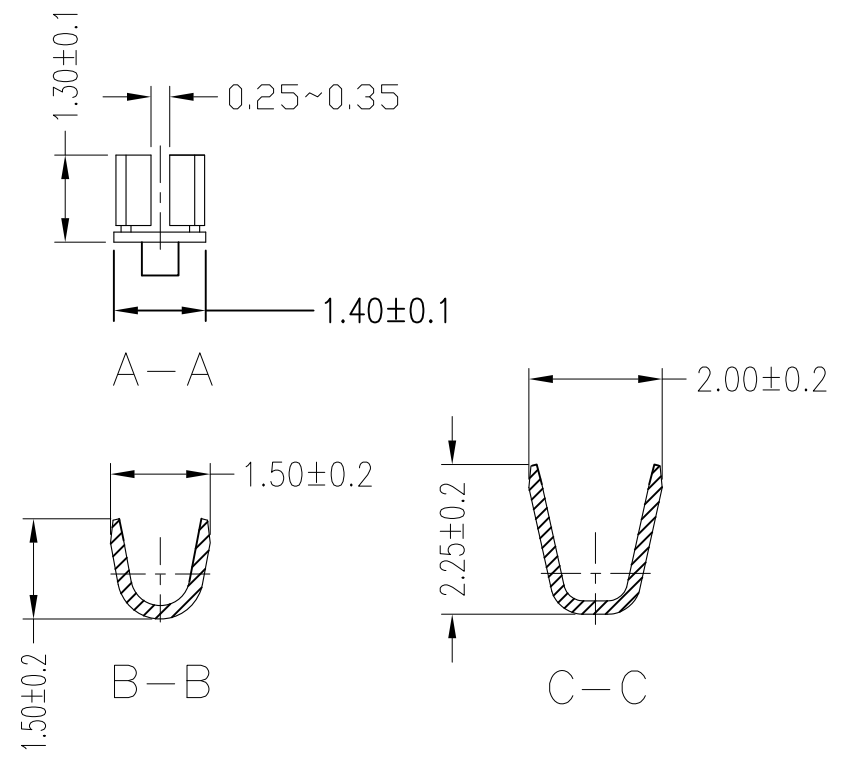
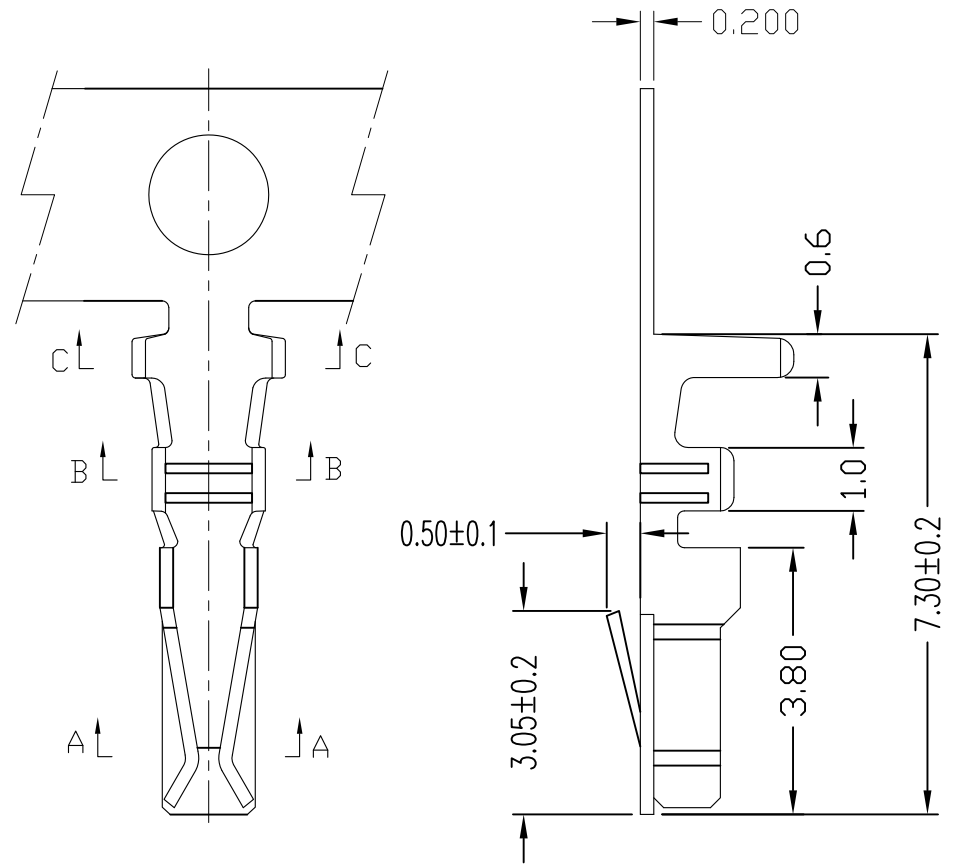
ITEM	COMPONENT	Q'TY	MATERIAL	FINISH
C				
B				
A	HOUSING	4~30 PCS	PA66	94-V0

<b>JKUN 温州健坤接插件有限公司</b> WENZHOU JKUN CONNECTOR CO.,LTD.		TITLE: -	
		2.00mmPITCH HOUSING	
X.±0.5 X.±5' .X±0.3 .X±2' .XX±0.25 .XX±1'	USE: CUSTOMER APPD: 邵敬和 CHKD: 田峰	PART NO.:	
		A2004Y-***-A5W-P	
-- -- UNITS: mm	DR: 蒋建银	DWG NO.:	
		JKUN-GCCP-0735	
		SCALE	SHEET
		1 : 1	1 / 1

A B C D E F

REV	ECN No.	DESCRIPTION	DESIGN	DATE
A0			吴丹平	2018.02.10

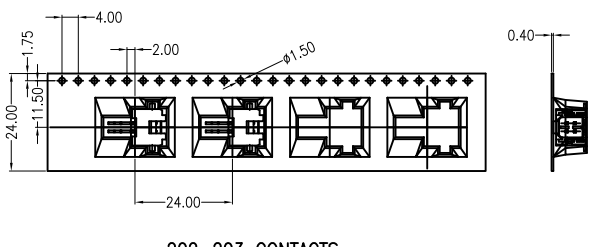


Ordering Information & Specification:

Part No	Wire Range	Insulation O.D.	Material	Finish	Qty/Reel
A2004T-03端子	AWG #22~#28	1.80mm(max)	Phosphor bronze	Tin-plated	

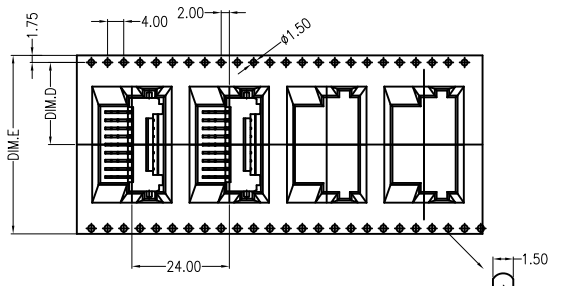
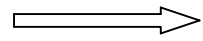
<b>JKUN</b> 温州健坤接插件有限公司 WENZHOU JKUN CONNECTOR CO.,LTD.		TITLE: - 高脚	
X.±0.3		USE: MANUFACTURE	PART NO.: A2004T-03端子
.X±0.2	.X±3'	APPD: 邵敬和	DWG NO.: JKUN-GCDZ-0078
.XX±0.1		CHKD: 田峰	SCALE 1 : 1
.XXX±0.05		DR: 吴丹平	SHEET 1 / 1
UNITS: mm			

REV	ECN No.	DESCRIPTION	DESIGN	DATE
A		Release	蒋建银	2020.05.29



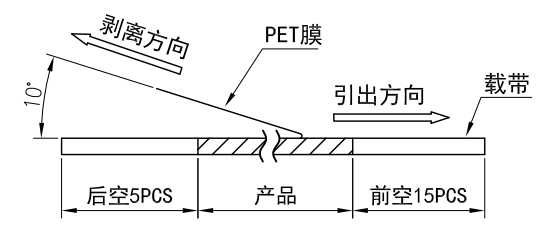
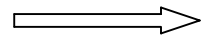
202~203 CONTACTS

产品引出方向

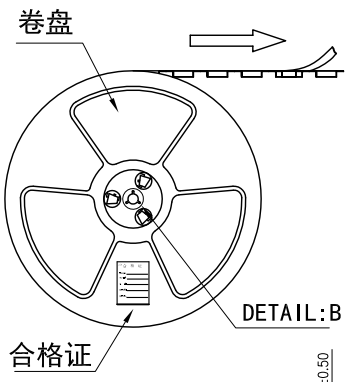


204~210 CONTACTS

产品引出方向

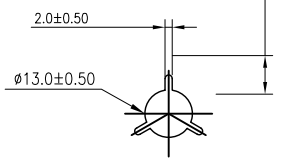


(PET膜剥离示意图)

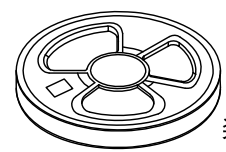


合格证

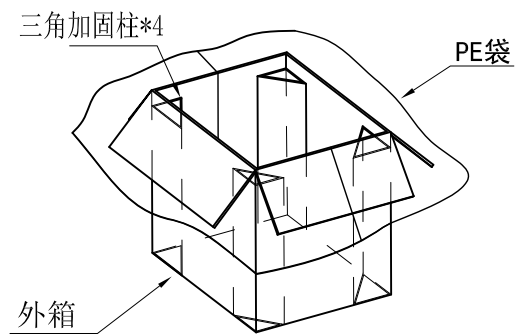
DETAIL:B



DETAIL:B



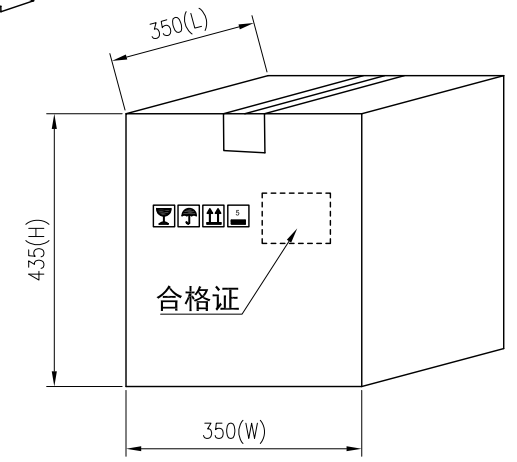
装\*\*盘(列表一)



外箱

PE袋

三角加固柱\*4



列表一

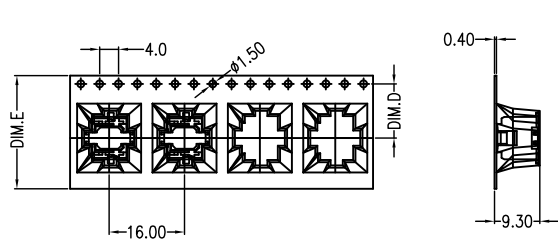
Circuits	DIM. D	DIM. E	Q'ty/Reel	Packing (Reel/Caton)
202~203PIN	11.50	24	300PCS	15/Reel
204~206PIN	14.25	32	300PCS	11/Reel
207~211 PIN	20.25	44	300PCS	8/Reel
2*12~2*16PIN	26.20	56	300PCS	7/Reel

包装说明:

1. 把成品包入卷盘中, 每盘装300PCS, 卷盘上贴上合格证, 将装好产品的卷盘放进外箱中, 外箱内先套一个大PE袋, 外箱上贴贴上合格证.
2. 所有材料有害物控制需符合RoHS标准.

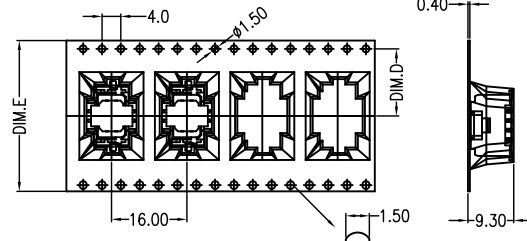
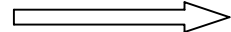
JKUN 温州健坤接插件有限公司 WENZHOU JKUN CONNECTOR CO., LTD.			TITLE:	
X.± 0.5	X.±'	USE: CUSTOMER	PART NO.:	
.X± 0.3	.X±'		A2004AWR-**-** 卷装	
.XX±0.25	.XX±'	APPD: 邵敬和	DWG NO.:	
--	--	CHKD: 曾令青	JKUN-GCBZ-0837	
UNITS: mm		DR: 蒋建银	SCALE 1 : 1	SHEET 1 / 1

REV	ECN No.	DESCRIPTION	DESIGN	DATE
A		Release	蒋建银	2020.03.25



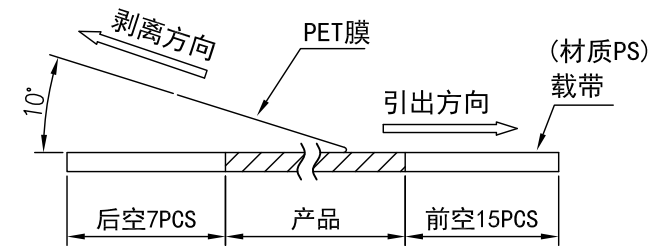
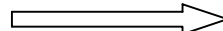
202~203 CONTACTS

产品引出方向



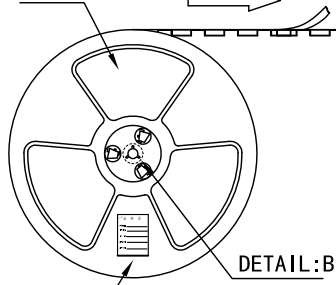
204~210 CONTACTS

产品引出方向



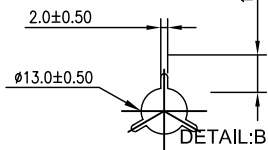
(PET膜剥离示意图)

卷盘 (材质PS)

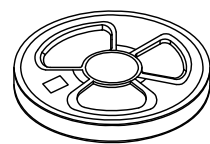
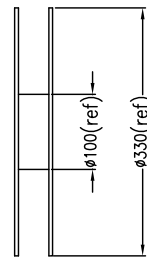


合格证

DETAIL: B



DETAIL: B

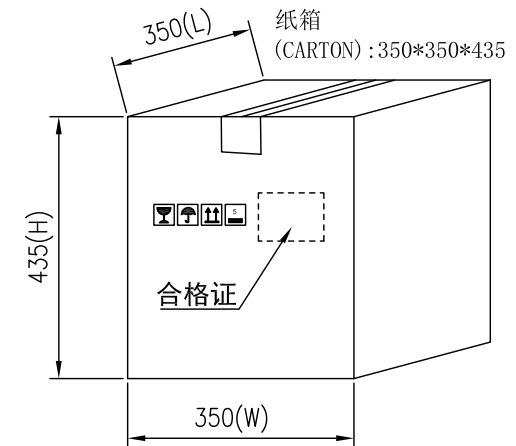


装\*\*盘 (列表一)

三角加固柱\*4

PE袋

外箱



列表一

Circuits	DIM. D	DIM. E	Q'ty/Reel	Packing (Reel/Caton)
202~203PIN	11.50	24	500PCS	15/Reel
204~206PIN	14.25	32	500PCS	11/Reel
207~212PIN	20.25	44	500PCS	8/Reel
213~216PIN	26.20	56	500PCS	7/Reel

包装说明:

- 把成品包入卷盘中, 每盘装500PCS, 卷盘上贴上合格证, 将装好产品的卷盘放进外箱中, 外箱内先套一个大PE袋, 外箱上贴贴上合格证.
- 所有材料有害物控制需符合RoHS标准.

JKUN 温州健坤接插件有限公司 WENZHOU JKUN CONNECTOR CO., LTD.			TITLE:
X.± 0.5	X.±*	USE:	PART NO.:
.X± 0.3	.X±*	CUSTOMER	A2004AWV-2** 卷装
.XX±0.25	.XX±*	APPD: 刘振岭	DWG NO.:
--	--	CHKD: 王亮	JKUN-GCBZ-0838
UNITS: mm	DR: 蒋建银	SCALE	SHEET
		1 : 1	1 / 1